

## **Presenting Art works for the Sooke Arts Council Gallery Shows.**

Our mission is to help emerging artists as well as established artists find their artistic voice. The common denominator to showing both together is to have a professional standard to the Gallery's framing standards.

To this end we will be requiring thin canvases be framed with no staples showing and painted one solid color with no chips or scratches.

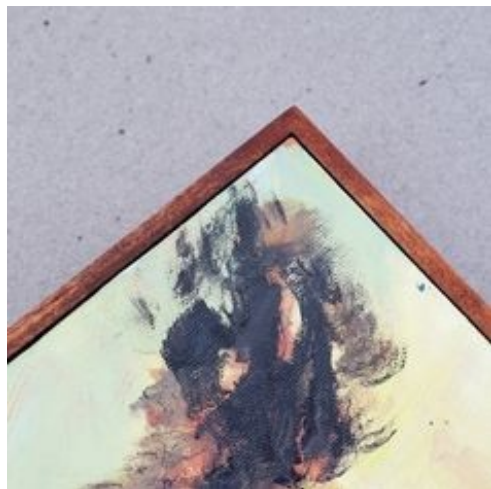
Thick gallery wrapped canvases can be displayed without frames but the sides must be painted one solid color or the front design continued around the sides.

Here are a few tips on keeping framing costs down but still representing the art work and artist in a professional manner.

1. Work on the same standard size canvas or substrate so frames are interchangeable or pick 2 or three different sizes for the same reason.
2. Take advantage of sales or discounts. Check out different stores prices.
3. Front loading or front drop-in are usually very reasonable. Average of 16"x 20" up to \$50 .

Your art, and you as the artist, will be more respected if you present your art work in a professional manner and price you work accordingly.

Front loading for thin canvas



Painted edges for wrapped deep canvas



Works on paper should be framed under glass or mounted on wood panels. Please ensure the piece and the frame are a proper fit. \*Any framed piece should have proper wire hanging hardware. Please contact us if you are unsure of your presentation.